



JACKSON O'ROURKE

ESTATE AGENTS



**2 Marina Way
Slough, Berkshire SL1 5NS**

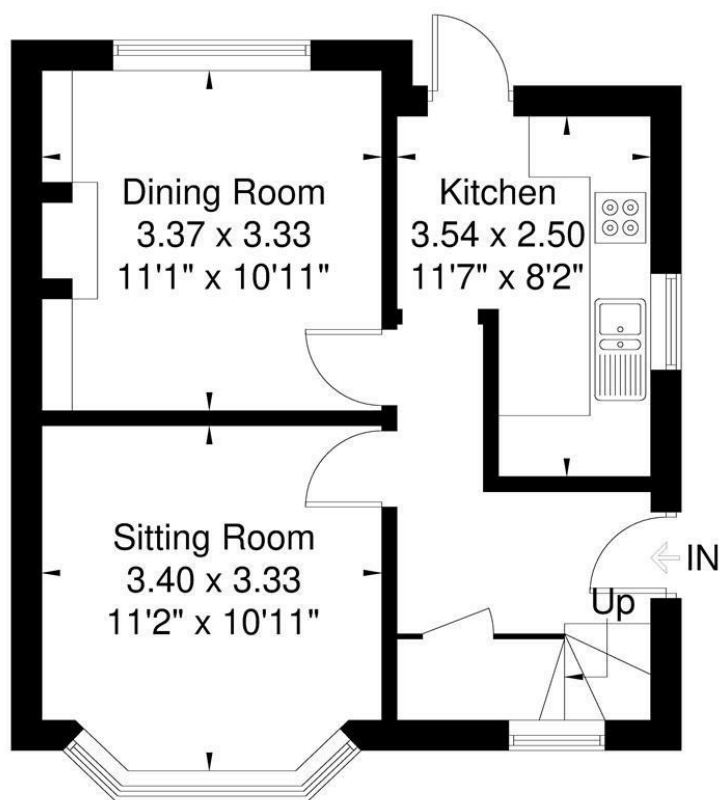
Asking price £440,000

Offered for sale is this superb three bedroom semi detached family home perfectly located in the heart of Cippenham Village.

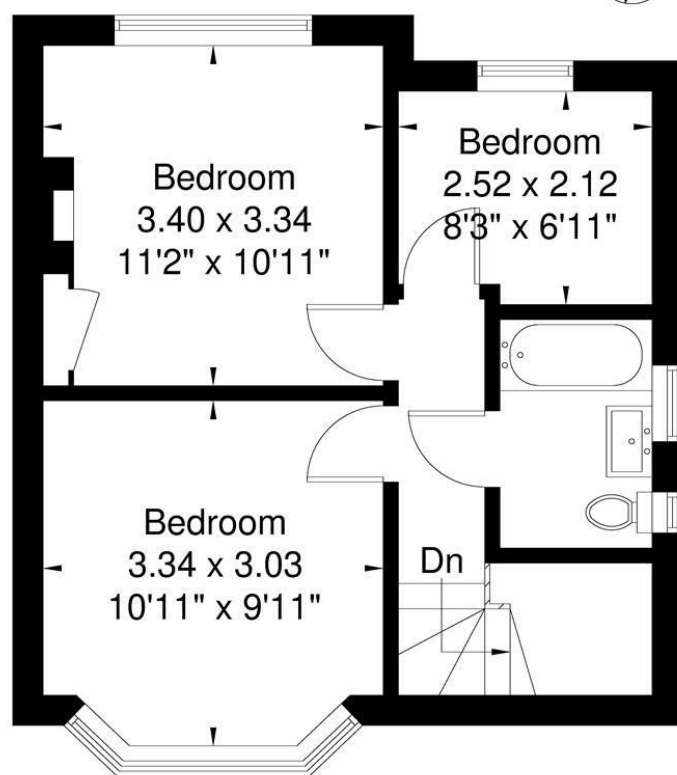
Key features include an entrance hallway, a living room, a dining room, a fully fitted kitchen, a family bathroom suite, three bedrooms, loft storage space which can be extended and converted to a large bedroom (subject to planning permission), gas central heating, UPVC double glazing, driveway parking and a good size private garden. The property is perfectly situated within walking distance of Burnham train station (Crossrail - The Elizabeth Line), which offers a regular service to London Paddington and The West End every 20 minutes. Less than a five minute drive from the property is junction 7 of the M4 motorway, which provides quick and easy access to Central London, Heathrow Airport and the M25/M40 motorway network. Numerous state, private and Grammar schools can be found in the area, most within walking distance, providing schooling from toddlers through to adult education. Plenty of supermarkets, local shops and several retail parks with famous brand names and familiar restaurants are all just a few minutes drive away. Freehold. We highly recommend early viewings to avoid disappointment.

Marina Way

Approximate Gross Internal Area = 76.6 sq m / 824 sq ft

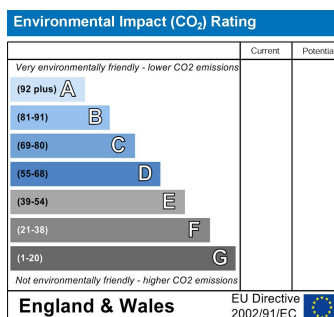
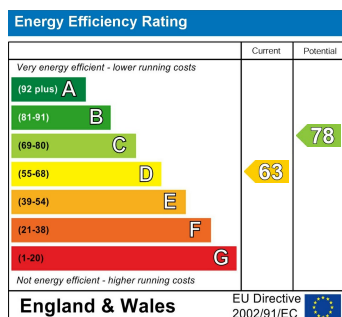


Ground Floor



First Floor

Illustration for identification purposes only,
measurements are approximate, not to scale.



Please Note: Jackson O'Rourke Estate Agents have prepared these sale particulars as a general guide. We have not carried out a detailed survey, nor tested the service appliances or specific fittings. Room sizes should not be relied upon for carpets and furnishings etc.

We believed these particulars to be correct however they are not guaranteed by the vendor or ourselves.. Prospective purchasers must satisfy themselves by inspection or otherwise as to the correctness of each statement contained in these particulars.